

# Anti-H\_MSLN hIgG1 Antibody(Amatuximab)

## Product information

GM-24027AB-10	10 µg
GM-24027AB-100	100 µg
GM-24027AB-1000	1 mg

## Antibody Information

Species Reactivity	Human
Clone	Amatuximab
Source/Isotype	Monoclonal human IgG1, κ
Application	Flow cytometry
Specificity	Detects MSLN
Gene	MSLN
Other Names	MPF, SMRP
Gene ID	10232(human)
Background	<p>MSLN is over expressed in several human tumors, including mesothelioma, ovarian cancer, pancreatic adenocarcinoma, lung adenocarcinoma, and cholangiocarcinoma. MSLN binds MUC16 (also known as CA125), indicating that the interaction of mesothelin and MUC16 may contribute to the implantation and peritoneal spread of tumors by cell adhesion. The region (residues 296-359) consisting of 64 amino acids at the N-terminus of cell surface mesothelin has been identified as the functional binding domain (named IAB) for MUC16/CA125, suggesting the mechanism of mesothelin acting as a MUC16/CA125 functional partner in cancer development. MSLN is a tumor differentiation antigen that is normally present on the mesothelial cells lining the pleura, peritoneum and pericardium. Since mesothelin is overexpressed in several cancers and is immunogenic, the protein could be exploited as tumor marker or as the antigenic target of a therapeutic cancer vaccine.</p>
Storage	Store at 2-8°C short term (1-2 weeks).Store at ≤ -20°C long term. Avoid repeated freeze-thaw.
Formulation	Phosphate-buffered solution, pH 7.2.
Endotoxin	< 1 EU/mg, determined by LAL gel clotting assay

Version:3.1 Revision Date:12/25/2023

## Data Examples

Flow cytometry

The recommended usage range is 0.5-4  $\mu\text{g}$  per test. H\_MSLN CHO-K1 Cell Line (Catalog # GM-C18992) was stained with Anti-H\_MSLN hlgG1 Antibody (Catalog # GM-24027AB) or isotype control antibody, followed by anti-Human IgG APC-conjugated Secondary Antibody.

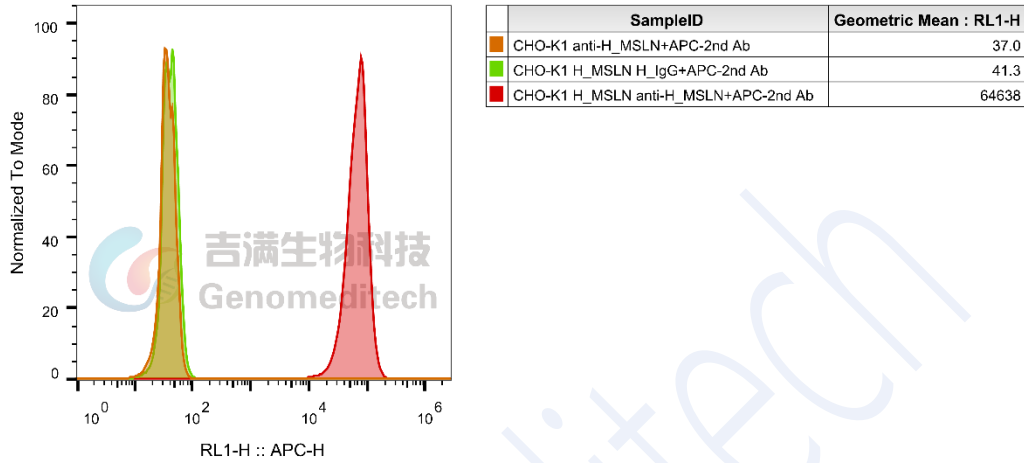


Fig. FACS